

# Sage 50 Manufacturing

## How to Create the Labour, Machine and Operation Registers.

Applicable Products Sage 50 Bills of Material, Sage 50 Batch Controller and Sage 50 Manufacturing Controller.



The Sage Manufacturing range allows for accurate operation costing. Key to this is the creation of the Labour and Machine Registers. These registers are important for the following reasons;

- Save time when creating operations
- Allow global changes to be made to BOMs when labour or machines rates change.
- Allow Machine or Labour Groups to be Created
- Used by the Graphical Planner as resources.

[Contact](#) Red Business Systems for a demonstration.

- i** Allow accurate BOM Costings.
- i** Easy to create registers.
- i** Make rate changes and easily update BOMS.
- i** Full installation, configuration and support provided by Sage Experts Red Business Systems.
- i** [View](#) Full Range of Sage Manufacturing applications

### Create the Labour Register

A screenshot of the 'Labour Details - OPERATOR.MILL.2' window. The window has a menu bar (File, Edit, View, Links, Help) and a 'Details' section. The 'Reference' dropdown is set to 'OPERATOR.MILL.2'. The 'Description' field contains 'Operator Mill 2'. The 'Memo' field is empty. The 'Hourly Charge Rate' is set to '10.00'. The 'Group' dropdown is set to 'OPERATOR.MILL.GROUP'. At the bottom, there are buttons for 'Save', 'Save and New', 'Discard', 'Delete', 'Previous', 'Next', and 'Close'.

Description of Labour process

Create Labour Group. Used by Graphical Planner

### Create the Machine Register

A screenshot of the 'Machine Details - LEADWELL1' window. The window has a menu bar (File, Edit, View, Links, Help) and tabs for 'Main Details', 'Other Details', and 'Calibration History'. The 'Details' section is active. The 'Reference' dropdown is set to 'LEADWELL1'. The 'Description' field contains 'Leadwell Milling'. The 'Memo' field is empty. The 'Hourly Charge Rate' is set to '50.00'. The 'Full Service' field is '0 hours.' and the 'Ordinary Service' field is '0 hours.'. The 'Group' dropdown is set to 'LEADWELL.GROUP'. At the bottom, there are buttons for 'Save', 'Save and New', 'Discard', 'Delete', 'Previous', 'Next', and 'Close'.

Machine Reference

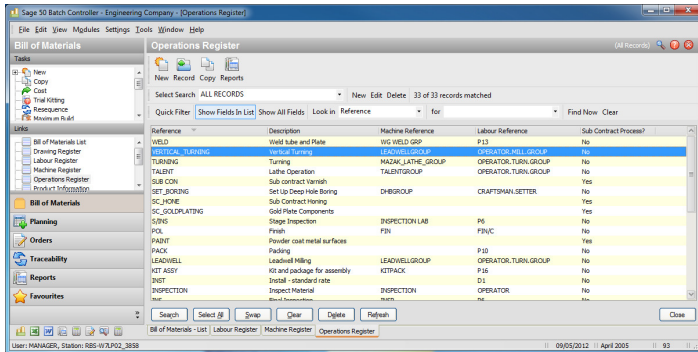
Hourly rate

Machine Group

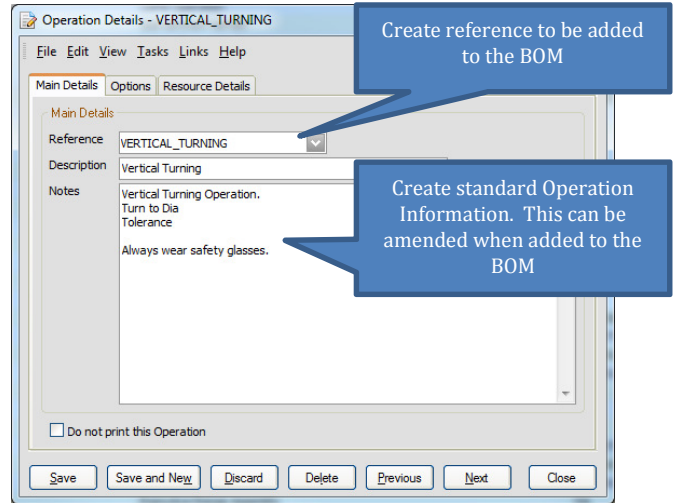


# How to Create the Operation Register.

## The completed Operation Register

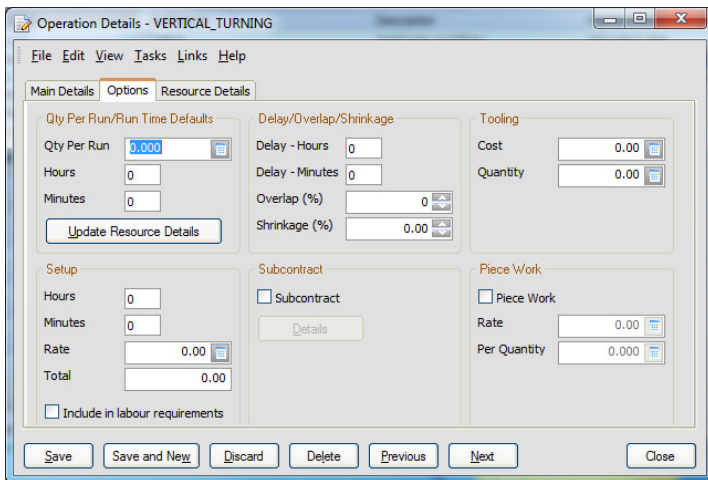


## Main Details



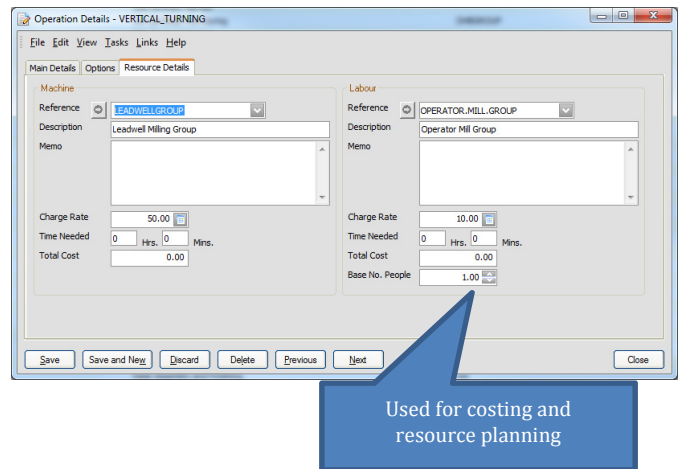
## Options Tab.

When creating the Operation Register, this can be left blank as is generally specific to the routing on the specific BOM.



## Resource Details

Combine the Machine Register and Labour Register. These are the resources used by this Operation.



## Key Features Include

- ✓ Operation Register combines Machine and Labour Resources.
- ✓ Subcontracting operations can be created.

- ✓ Labours costs and Machine Costs updated using Global Change.
- ✓ Add the Operation to the BOM Routing and make specific for that BOM

For further information or a demonstration please contact Red Business Systems  
[www.redbusinesssystems.com](http://www.redbusinesssystems.com) . Tel 01242 516885.