

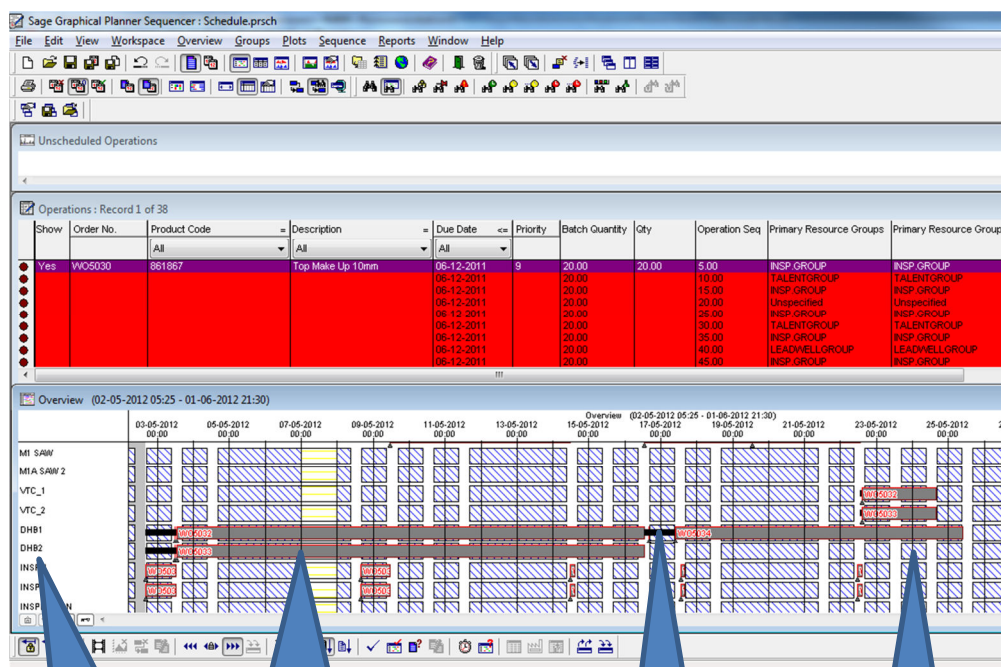
Sage 50 Manufacturing

Advanced Production Scheduling (APS) using the Sage 50 Graphical Planner written by Preactor.



Included with Sage 50 Manufacturing is the Graphical Planner a powerful planning tool written by [Preactor International](#). This application links seamlessly with [Sage Manufacturing](#) to provide an easy to use Graphical Planning tool.

[Contact](#) Red Business Systems for a demonstration



- i Graphical Planner powered by 'Preactor'. Market leader for planning and scheduling software
- i Plan with Infinite or Finite Resources
- i View Machine Utilisation Charts
- i Print Work To Lists for Workstations and machine groups.
- i Full installation, configuration and support provided by Sage Experts Red Business Systems.
- i View Full Range of Sage Manufacturing applications

Individual Resources Grouped as Machine Groups

Operations can be scheduled concurrently through machine groups

Machine Set Up times included in operations

Non-Working Periods Displayed



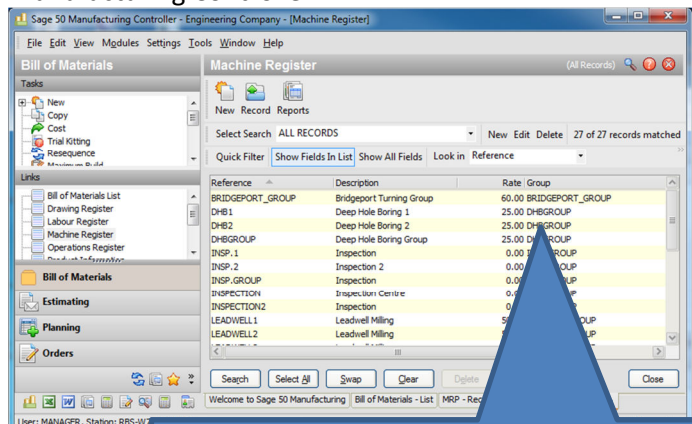
Other Key Features Include

- ✓ Removes machine conflicts and overloads
- ✓ See machine utilisation reports
- ✓ Plan resources and resource groups to work different shift patterns
- ✓ Enter Machine Breakdowns and Planned Maintenance.
- ✓ Operations removed from the planning board as completed.



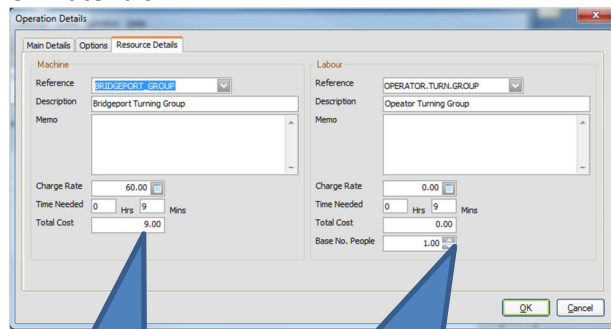
How to Configure and Use The Sage 50 Graphical Planner.

Create Machine and Machine Groups within Sage Manufacturing Controller.



WorkCentre's of the same type are put into a machine group. Allowing simultaneous planning.

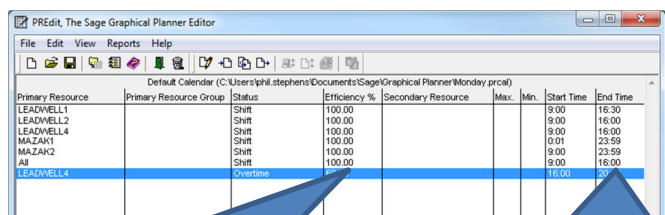
Add the Operations to the Sage Manufacturing Bills of Materials.



Detail time taken for the Operation

Enter number of people for planning and costing.

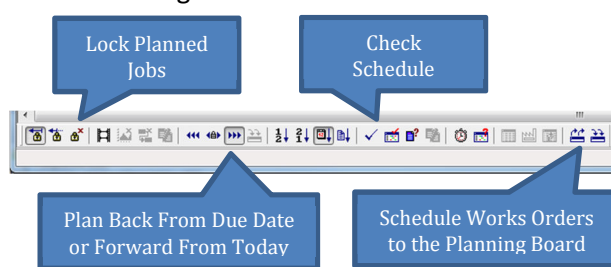
Operational hours can be detailed for each Work Centre



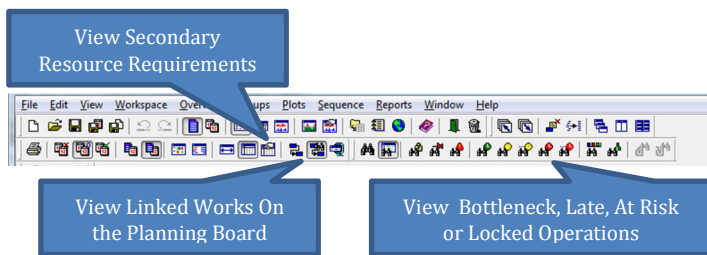
To accurately plan, different shifts can have different efficiencies

Workstation can have different start and end dates.

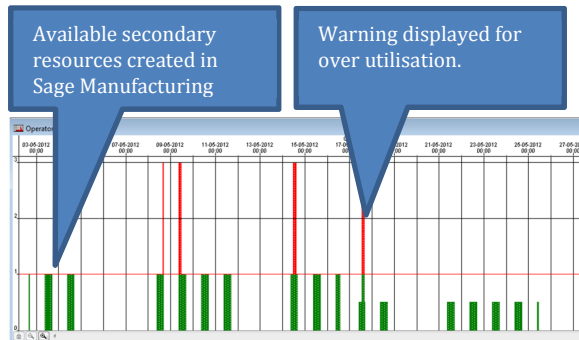
The Scheduling Tool Bar



View Scheduled Jobs



View Secondary Resource Requirements



Upgrade to other solution in the Preactor range including the [Sage Assembler Controller](#) . Additional functionality includes;

- ✓ Peg Purchase Orders and Stock Items to Operation against the Bill of Material.
- ✓ Plan on Dual Constraints e.g. Workstations and Labour.

For further information or a demonstration please contact Red Business Systems www.redbusinesssystems.com . Tel 01242 516885.